

SoundEar®3

Manage the volume with SoundEar®3

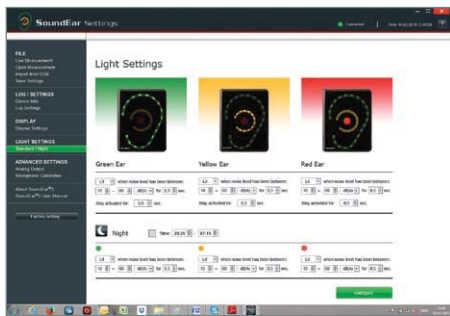
For more information: www.soundear.com

Nothing escapes SoundEar[®]3

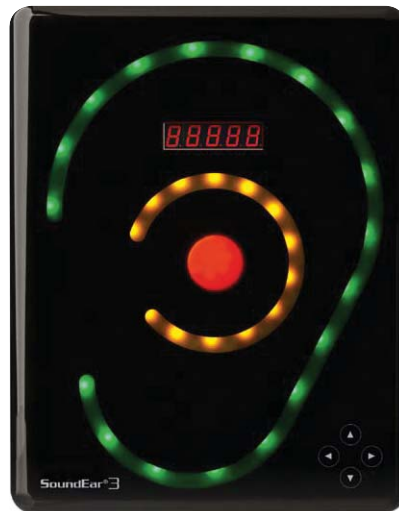
SoundEar[®]3 provides automatic surveillance and controlling of noise levels in the nightlife.

Place SoundEar[®]3 in the bar, on the dance floor or outside on the terrace – and get notified on your mobile if noise levels exceed your limits.

1. Configure



- Adjust light settings and visual alarm
- Select output
- Set log settings
- Type your mobile number



2. Monitor



SoundEar[®]3 Specifications

Frequency Range:	20 Hz – 20 kHz
Measuring Level Range:	30 dB – 120 dB
Deviation:	+/- 0.5 dB
Frequency Weighting:	dB (A) & dB (C) filter
Time Weighting:	Slow (1S) & (125mS)
Dynamic Range RMS:	90 dB and Peak detection
Light setting:	Full configurability through SoundEar [®] software including night setting.
2 x Outputs (1 for dB A + 1 for dB C):	Either 0-10V or 4-20mA outputs
2 x USB ports:	Micro USB (Power & PC), USB OTG (Log, config.)
Display data:	dB(A) Slow, Leq(A)15, Alarm settings, Temperature & Clock
Power supply:	5VDC (micro USB) / 24VDC (screw terminal)

Current consumption:	max 2.5W.
Microphone:	20 Hz – 20 kHz
Internal memory:	16MB (128MBit) (5-90 days log time, depending on log settings)
Real Time Clock:	Hi-precision type with battery backup (CR2032).
Mechanical properties:	Cabinet: Shockproof acrylic.
Measurements:	Length: 265mm, Width: 205mm. Height: 46mm, Weight: 1.5 kg.
Standards:	IEC61672-2-2002. Type 2, ANSI S1.4 Type 260601-1: Medical electrical equipment - Part 1: General requirements for basic safety and essential performance. 60601-1-2: Medical electrical equipment – Part 1-2: General requirements for basic safety and essential performance.

3. Alarm



- Receive SMS notifications at critical noise levels.
- Switch off the power with SoundBuster relay box if noise limits are exceeded repeatedly.

- 24/7 monitoring
- Non-stop surveillance up to 6 weeks
- All data is organized automatically in a simple calendar system.